

# INSTALLATION GUIDE

## AXIS Camera Station

## About this Guide

This guide is intended for administrators and users of the AXIS Camera Station, and is applicable for software release 3.0 and later. It covers the installation of AXIS Camera Station Server and AXIS Camera Station Client as well as instructions for using and managing the AXIS Camera Station on your network. Later versions of this document will be posted to the Axis Website, as required. See also the product's help pages.

## Safety Notices Used In This Manual

**Important!** - Indicates a hazard that can seriously impair operation.

Do not proceed beyond the above notice until you have fully understood the implications.

## Intellectual Property Rights

Axis AB has intellectual property rights relating to technology embodied in the product described in this document. In particular, and without limitation, these intellectual property rights may include one or more of the patents listed at <http://www.axis.com/patent.htm> and one or more additional patents or pending patent applications in the US and other countries.

## Legal Considerations

Camera surveillance can be prohibited by laws that vary from country to country. Check the laws in your local region before using this product for surveillance purposes.

## Liability

Every care has been taken in the preparation of this manual; Please inform your local Axis office of any inaccuracies or omissions. Axis Communications AB cannot be held responsible for any technical or typographical errors and reserves the right to make changes to the product and manuals without prior notice. Axis Communications AB makes no warranty of any kind with regard to the material contained within this document, including, but not limited to, the implied warranties of merchantability and fitness for a particular purpose. Axis Communications AB shall not be liable nor responsible for incidental or consequential damages in connection with the furnishing, performance or use of this material.

## Trademark Acknowledgments

Internet Explorer, Linux, Macintosh, Microsoft, Mozilla, Netscape Navigator, OS/2, UNIX, Windows, WWW are registered trademarks of the respective holders. Java and all Java-based trademarks and logos are trademarks or registered trademarks of Sun Microsystems, Inc. in the United States and other countries. UPnP is a certification mark of the UPnP<sup>TM</sup> Implementers Corporation. Axis Communications AB is independent of Sun Microsystems Inc.

## Axis Customer Services

Should you require any technical assistance, please contact your Axis reseller. If your questions cannot be answered immediately, your reseller will forward your queries through the appropriate channels to ensure a rapid response. If you are connected to the Internet, you can:

- download user documentation and software updates
- find answers to resolved problems in the FAQ database. Search by product, category, or phrases
- report problems to Axis support staff by logging in to your private support area visit the Axis Support Web at [www.axis.com/techsup/](http://www.axis.com/techsup/)

# AXIS Camera Station Installation Guide

## Minimum recommended requirements

For best performance and stability these minimum requirements must be met.

### Hardware Client PC:

- Windows Vista Business, XP Professional, Windows Media Player 11  
Always use the latest service packs
- CPU: Intel Pentium 4 or higher, 2 GHz  
(Intel Core 2 Quad recommended for larger systems)
- RAM: 1 GB (4 GB recommended for larger systems)
- Screen: 1024 x 768
- Graphic card with DirectX 9.0c; Onboard video memory of 256 MB  
Use latest graphic card driver
- Microsoft .NET runtime environment (included in installation package)

### Hardware Server PC:

- Windows Vista Business, XP Professional, Server 2008, Server 2003  
Always use the latest service packs
- CPU: Intel Pentium 4, 2 GHz (Intel Xeon recommended for larger systems)
- RAM: 1 GB (4 GB recommended for larger systems)
- Microsoft .NET runtime environment (included in installation package)

### Network:

- 100 Megabit Network  
(Gigabit Network recommended for larger systems)

### Hard disk configuration:

- At 30 fps in VGA up to 15 cameras per hard disk

## Overview

This document will help you install AXIS Camera Station and configure it for your Axis Network Cameras and Axis Video Encoders. A brief introduction to the functionality of the software is covered here, see the help files or the AXIS Camera Station User's Manual for a detailed description. The User's Manual is available on the CD and on [www.axis.com](http://www.axis.com)

AXIS Camera Station is a complete monitoring and recording system for use with Axis Network Cameras and Video Encoders. This installation includes AXIS Camera Station Server and Client.

AXIS Camera Station Server handles the communication with the cameras while AXIS Camera Station Client provides quick and easy access to up to 50 connected and configured cameras, recordings, inputs and outputs used in the system.

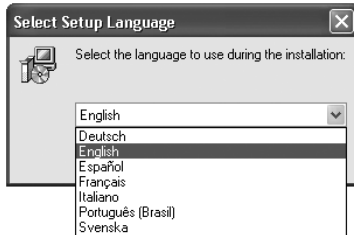
## Configuration

Quick links to all dialogs that allow control and configuration of all aspects of the AXIS Camera Station client are found in the workspace **Configuration**. They can also be found under menu items Configuration and Options.

## Install AXIS Camera Station Software

Install AXIS Camera Station Server on a dedicated computer.

1. Insert the CD in the CD drive. If the installation CD does not auto-start, click `autorun.exe` in the CD's root folder.
2. From the CD's interface, click **Software** and then **AXIS Camera Station**
3. Select the preferred language to install.



**Note:** You may be prompted to...

- install .NET Framework. Simply follow the Installation Wizard's instructions
  - update the computer's graphics card driver. For information on how to do this, see the AXIS Camera Station User's Manual or help files
4. Next, you will be asked where you wish to install the program. If nothing is specified the program is installed in **C:\Program Files\Axis Communications\AXIS Camera Station 3**
  5. Select components to install. Full installation includes AXIS Camera Station Client and Server. If you have already installed AXIS Camera Station Server on another computer you may choose to install only AXIS Camera Station Client.

Firewall - AXIS Camera Station Server accepts incoming network requests from AXIS Camera Station Clients that can be located outside of your local network. If your computer has a firewall installed it must be configured to allow incoming network requests. See the chapter *Network Configuration* in AXIS Camera Station User's Manual.

6. Click your way through the Installation Wizard.

## Network Configuration

AXIS Camera Station can record and play back video from cameras that are connected over a LAN (Local Area Network) or over a WAN (Wide Area Network). Depending on your installation, follow the instructions for firewall/NAT settings under *Network Configuration* in *AXIS Camera Station User's Manual*.

## Connect AXIS Camera Station Client

To connect AXIS Camera Station Client to a Server, from the Start menu, click **AXIS Camera Station 3 > AXIS Camera Station Client** or click on the **AXIS Camera Station Client** icon on your desktop.



### Installed on the same computer

To log onto the AXIS Camera Station Server installed on the same computer as your AXIS Camera Station Client, check **Use local server** and click **Connect**.

### Installed on another computer

To log onto an AXIS Camera Station Server that is installed on another computer than your AXIS Camera Station Client.

1. Deselect **Use local server** and enter the address of the AXIS Camera Station Server you wish to connect to.  
If the server is configured to accept clients on a different port than the default port 55752, enter the address followed by the port number.  
For example, 192.168.0.5:46001
2. Check **Log on as current user** or enter **User name**, **Password**, and **Domain**.



3. If a proxy server is used by AXIS Camera Station Client and AXIS Camera Station Server, click **Configure** to open a dialog and enter Proxy settings.
4. Click **Connect**.

For more information click **Help** or see AXIS Camera Station User's manual

## AXIS Camera Station Activation

The first time you start AXIS Camera Station you will be asked to register your license. The License Key can be used for only one current installation. Once registered it cannot be used again. The License Key is your proof of purchase, keep it in a safe place for future reference.

## Licenses

A base license is required to run AXIS Camera Station and allows for 4 or 10 cameras to be used with the program. Upgrade licenses for additional cameras can be installed under **Options > Licenses**, see AXIS Camera Station User's Manual for more information.

There are three licenses available for purchase at your local Axis reseller:

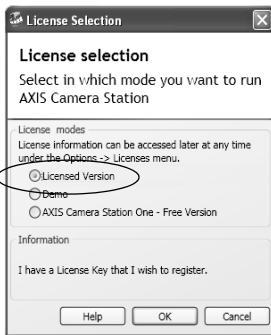
- Base license- For 4 or 10 cameras/channels
- Upgrade license - For additional cameras
- **Support license** - A support license will grant you one-year additional support and upgrade from the day when the base license or previous support license expired.

Licenses and the time period remaining are displayed under **Options > Licenses**. MyAxis ([www.axis.com/reg/](http://www.axis.com/reg/)) also shows your registered licenses and activation dates.

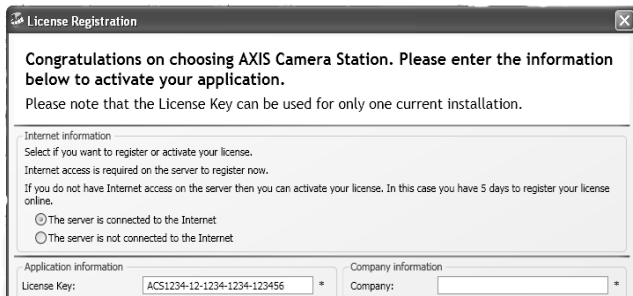
## Internet connection: Register automatically

If AXIS Camera Station is installed on a computer with Internet access you can register automatically. Your license information is sent directly to the Axis Web server.

1. Select **Licensed Version** and click on the **OK** button.



2. Select the option **The server is connected to the Internet** and fill in the requested information. The License Key is found on the inside of the AXIS Camera Station CD casing. Click **Activate**.



3. Your license information will be sent to Axis Communications and your software will be activated automatically.
4. You can now start using AXIS Camera Station.



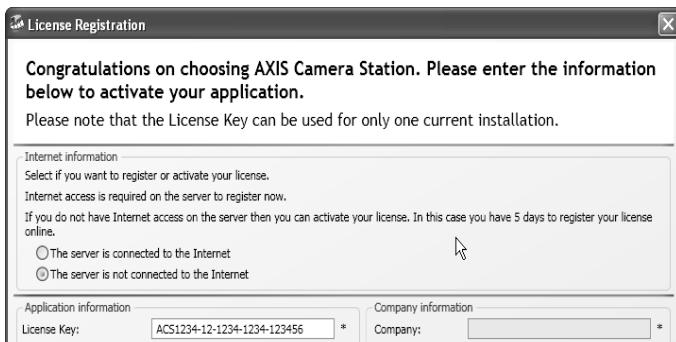
## No Internet connection: Register manually

If AXIS Camera Station is installed on a computer without (or with low-speed) access to the Internet, you can acquire the Access code that is needed to activate the software from the Axis Web site and enter it manually.

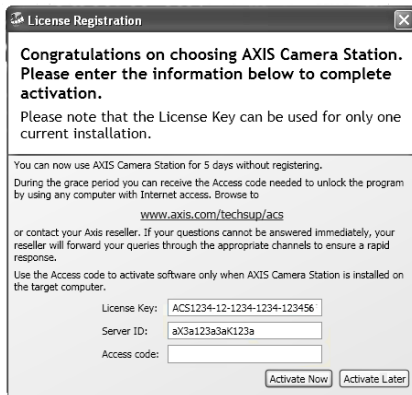
1. Select **Licensed Version** and click on the **OK** button



2. Select the option **The server is not connected to the Internet** enter the License Key.
3. Click **Register**.



4. A dialog opens with the **Server ID**, make a note of it. You will need the Server ID when filling in information on the Internet form to receive an Access code.

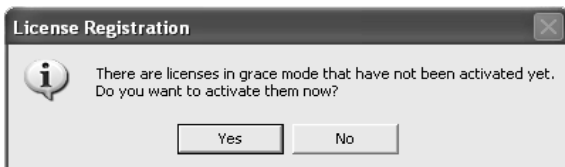


5. Click **Activate Later**. You can now use AXIS Camera Station for 5 days.

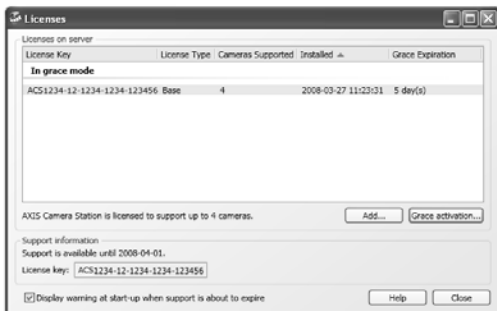
## Activate licenses in Grace mode

During the grace period you can receive the Access code by using any computer with Internet access. Browse to <http://www.axis.com/techsup/acs>, fill in the requested information and click **Submit**. You will be given an access code.

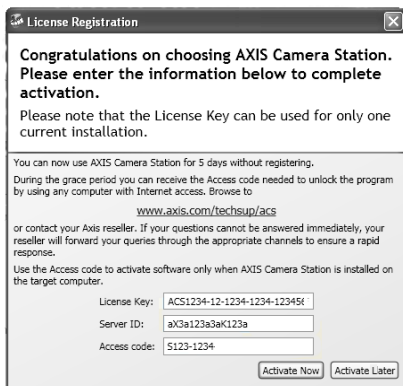
1. When you have received the access code, select **Yes** to the License Registration prompt when starting up AXIS Camera Station.



2. Click the **Grace activation** button in the Licenses dialog.



3. Enter your Access code. License Key and Server ID are filled in automatically.



4. Click **Activate Now**.

## Register License from 30-day Demo or AXIS Camera Station One

If you are currently running the Demo version or AXIS Camera Station One and wish to switch to the full version of AXIS Camera Station, you can register your license by selecting **Options > Licenses** from the main menu. Follow the instructions for "*Internet connection: Register automatically*" described on page 8 or "*No Internet connection: Register manually*" described on page 9.

## Configure AXIS Camera Station

For easy navigation AXIS Camera Station is divided into workspaces; **Live view**, **Recordings**, **Logs** and **Configuration**.

- **Live view** - Provides a single interface to organize and monitor AXIS network cameras and video encoders on your network
- **Recordings** - Search, playback and export recordings from one or many cameras in a desired time interval with timeline visualization
- **Logs** - Alarm, event and audit logs for an instant overview of the system
- **Configuration** - has a collection of all the important links to add cameras, set up recording settings, user permissions, event configuration and more

When AXIS Camera Station is started for the first time it automatically adds Axis cameras and video encoders it finds on your network. If there are more cameras on your network than you have a license for, go to **Configuration > Add/Edit Cameras**.

For more information see the context sensitive help in AXIS Camera Station or the User's Manual.

# AXIS Camera Station User Interface

Links to Workspaces

Toolbar

View Groups

Audio & PTZ Controls

Alarm logs

