

◆ XProtect Expert

Advanced video surveillance with central management



XProtect Expert has central management interface features that allows large systems with multiple recording servers to be efficiently managed as one uniform system. Using scheduled and event-driven rules, it is easy to automate security actions and control external systems, reducing the amount of manual tasks. XProtect Expert also has efficient alarm handling and the ability to flag suspicious incidents for later review.

◆ Central system management

The management interface includes a wide range of tools that ease the daily administration of large systems that may be deployed across different geographical locations. The device group management concept enables fast and structured management of cameras and other connected devices in large installations.

◆ Scalable solution

A highly efficient recording server makes it possible to run more cameras on less hardware and provides unlimited system scalability. This gives system integrators flexibility in the design and scaling of customer systems and allows customers to grow with their system.

◆ Situational awareness

Interactive maps combined with the Alarm Manager enable users to quickly visually verify the location and cause of alarms, helping to decrease the number of false alarms. The bookmark function allows users to mark sections of video that are of particular interest and add descriptive notes for later analysis or sharing with other users.



Sport stadiums

Video surveillance makes it easier to manage large public places like stadiums. Using XProtect software authorities can patrol the stands and surrounding areas and zoom in on problem areas before dispatching police.

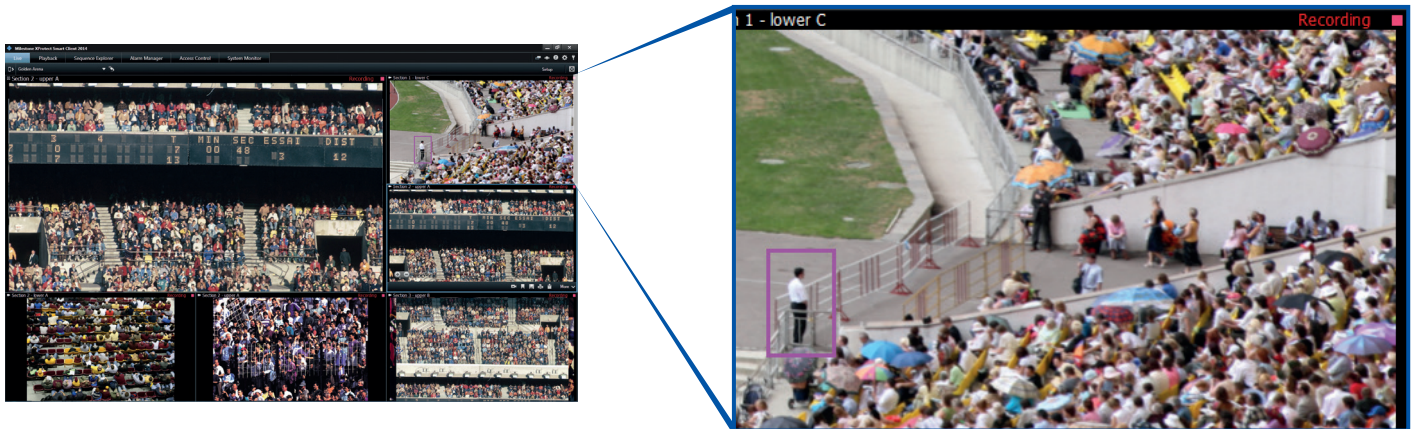
What's new in 2014

Support for XProtect Smart Wall

Operators can coordinate response activities using XProtect Smart Wall, an add-on video wall product that displays all video in the installation. It is an ideal solution to gain an overview and share information in any large surveillance installation.

Bounding boxes

Metadata generated by edge-based video analytics in cameras can be used to identify and highlight objects with bounding boxes in both live and playback.



Did you know?

Milestone offers free XProtect support resources including a Knowledge Base of support articles, a support forum and product manuals and guides.

Get support from our website:
www.milestonesys.com.

Enhanced system security

Dual authorization offers an additional level of system security for customers operating in high-security areas. Users are only granted access to the system once a second user or supervisor has confirmed the log-in with the successful authorization of the second user.

Automatic motion detection adjustment

Adjusts the sensitivity level to optimize motion detection for background noise levels in the video stream.

Product facts

Number of cameras	Unlimited
Maximum number of recording servers	Unlimited
Milestone Interconnect	Supported
Milestone Federated Architecture	Supported

Product highlights

- ▶ Scalable multi-server solution
- ▶ Centralized management
- ▶ Rule engine
- ▶ Multi-layer interactive maps
- ▶ Bookmarking
- ▶ Edge Storage
- ▶ Metadata support
- ▶ User rights management
- ▶ Alarm management
- ▶ Supports XProtect Smart Wall
- ▶ System configuration API
- ▶ Customizable management interface