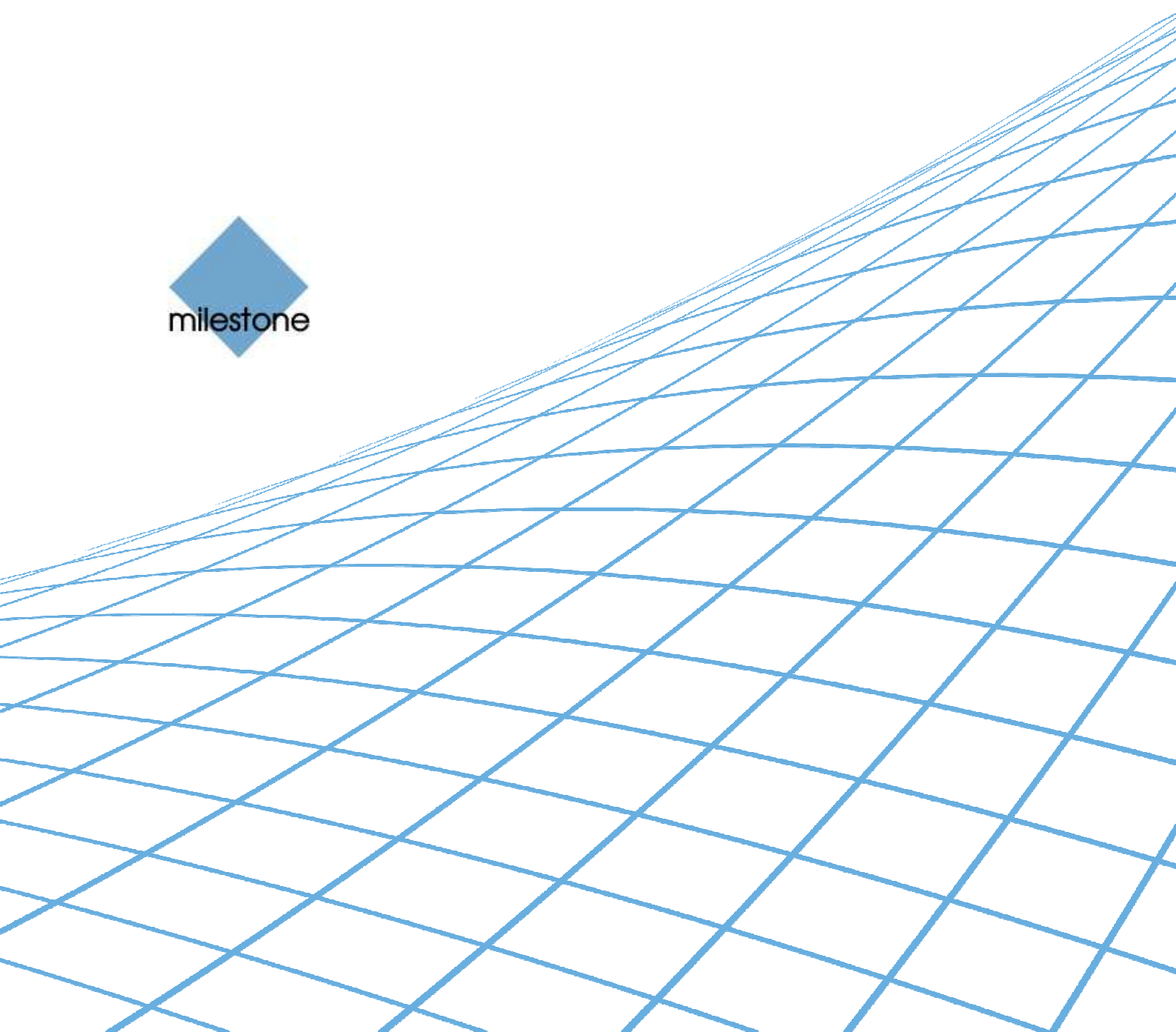




Milestone XProtect[®] Axis T8310 Controller Smart Client Plug-in User's Manual





Target Audience for this Document

This document is aimed at users of the Milestone XProtect Smart Client, and provides descriptions of how to install and maintain the plug-in for Axis T8310 Controller in the Smart Client.



Contents

COPYRIGHT, TRADEMARKS & DISCLAIMERS	4
INTRODUCTION	5
INSTALLATION	6
VIDEO SURVEILLANCE CONTROL BOARD INSTALLATION	7
CONFIGURATION & LICENSING	8
License File.....	8
Missing License File Error Messages	9
Configurable Actions.....	10
Example of Select Camera	10
Example of Select Monitor	11
Joystick Options	12
Profile Options	12
DEFAULT SETTINGS.....	14



Copyright, Trademarks & Disclaimers

Copyright

© 2013 Milestone Systems A/S.

Trademarks

XProtect is a registered trademark of Milestone Systems A/S.

Microsoft and Windows are registered trademarks of Microsoft Corporation.

All other trademarks mentioned in this document are trademarks of their respective owners.

Disclaimer

This document is intended for general information purposes only, and due care has been taken in its preparation.

Any risk arising from the use of this information rests with the recipient, and nothing herein should be construed as constituting any kind of warranty.

Milestone Systems A/S reserve the right to make adjustments without prior notification.

All names of people and organizations used in this document's examples are fictitious. Any resemblance to any actual organization or person, living or dead, is purely coincidental and unintended.

This product may make use of third party software for which specific terms and conditions may apply. When that is the case, you can find more information in the file *3rd_party_software_terms_and_conditions.txt* located in your Milestone surveillance system installation folder.



Introduction

Axis T8310 is a video control station that enables users to view and control cameras and video recorders at local and remote facilities. The reader of this document should have knowledge of the AxisT8310 operation. A full description of the AxisT8310 is found in a separate document, ug_T81series_38417_en_1002.pdf, available from Axis Communications.

The AxisT8310 Smart Client Plug-in enables AxisT8310 to perform a subset of Milestone XProtect Smart Client functionality instead of using the Smart Client user interface.

There is no one-to-one mapping of AxisT8310 functions to Smart Client functions and vice versa. Some AxisT8310 functionality is not applicable for Smart Client, and the Smart Client contains functionality not implemented by the AxisT8310.



Installation

The Smart Client plug-in for AxisT8310 keyboard comes with an installer. To install the plug-in, do the following:

1. Double-click *Milestone_AxisT8310_Plugin_Installer_x64_en-US.msi*. This will start the installation wizard.



2. When the installation wizard starts, click *Next*, and complete the wizard.

During installation, the following files are installed:

- plugin.def
- VideoOS.RemoteClient.Plugin.AxisT8310.dll (Plugin only)
- VideoOS.RemoteClient.Plugin.AxisT8310.dll.config (Plugin only)
- VideoOS.Keyboards.AxisT8310Plugin.dll
- VideoOS.Keyboards.KeyboardPluginBase.dll
- AxisJoystickModule.dll
- Interop.AxisJoystickModuleLib.dll
- iowkit.dll
- spinkit.dll
- Docs\ ug_T81series_38417_en_1002.pdf
- Docs\ MilestoneXProtectSmartClient_Axis_T8310_Controller_Plug-in_Users_Guide_en-US.pdf (this file)



Video Surveillance Control Board Installation

AXIS T8310 Video Surveillance Control Board consists of three units that can be installed separately. All the units are powered through the USB connection.

To install the AXIS T8310 Video Surveillance Control Board, plug the AXIS T8310 Video Surveillance Control Board into the USB port on your PC.



Configuration & Licensing

To show the configuration window of the plug-in, do the following:

1. Click the *Options* button in the top right corner of the Smart Client.



2. In the popup *Options* form, select *Axis T8310 Keyboard Setup*.

License File

The 'About' tab shows additional information related to the plug-in such as licensing info, version etc.

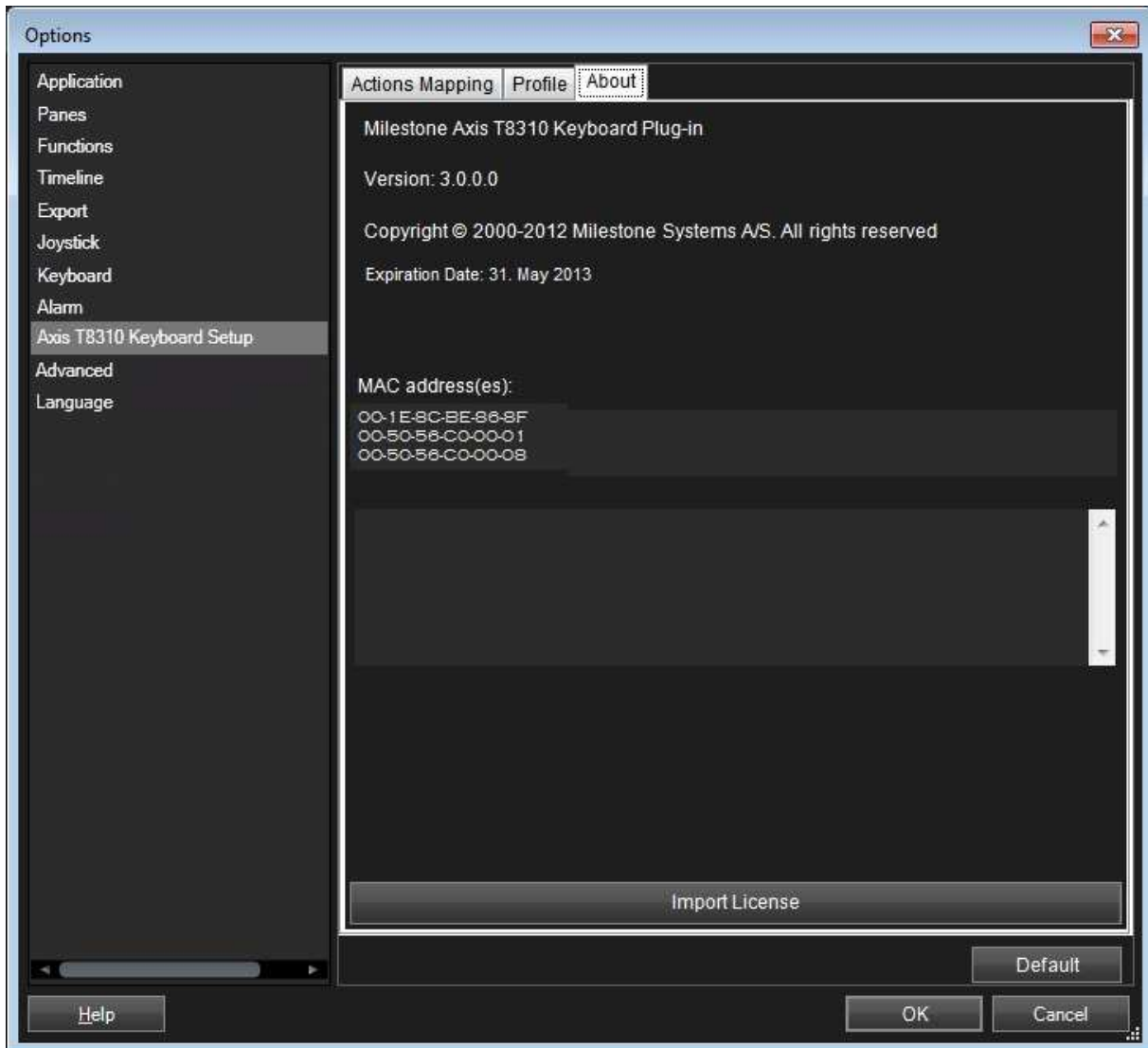
The license file can be imported by clicking the 'Import License' button located in the 'About' tab. After importing, the plug-in will verify the chosen license file and enable functionality immediately if the verification is successful.

Note: The user importing the license file must have appropriate user rights to the plug-in folder. Therefore it's advisable to launch the Smart Client using 'Run as administrator' when the license file is imported.

If so desired, the license file (*AxisT8310Keyboard.lic*) can also be manually copied to one of the following default installation folders:

- **32 bit operating system:** C:\Program Files\Milestone\MIPPlugins\VideoOS.Keyboards.AxisT8310Plugin \
- **64 bit operating system and 32 bit Smart Client:** C:\Program Files (x86)\Milestone\MIPPlugins\VideoOS.Keyboards.AxisT8310Plugin \
- **64 bit Smart Client:** C:\Program Files\Milestone\MIPPlugins\VideoOS.Keyboards.AxisT8310Plugin \

A license file can be temporary or permanent, tied to a MAC address or to a SLC.



Note: MAC addresses are listed in the About dialog. To acquire a permanent license file, please submit a purchase order, containing the SLC of the XProtect Server and the MAC address of the computer where the keyboard is attached, through the Milestone Online Order System.



Missing License File Error Messages

Error messages will be displayed on the Axis T8310 Keyboard Setup dialog only if license checking fails. Examples:

- If no license file was found:

Failed to load file. Exception message: Could not find file 'C:\Pro...



- If license has expired:

The license has expired.

Configurable Actions

The AxisT8310 Smart Client Plug-in contains a method for sending user-defined instructions to the Smart Client. The number of configurable actions is configurable, but currently limited to 640. The default value is 12.

Actions are configured using the setup module, described later in this document. They are activated by pressing a number followed by pressing the ALT key (configurable, can be changed to F1, F2...) on the AxisT8310.

Example: Pressing 1 and 2 on the numeric keypad followed by ALT (default), send the instruction that is defined as number 12 in the generic actions list to the Smart Client. If no instruction is defined for generic action 12, nothing happens.

In the Axis T8310 Keyboard Setup dialog you define the instructions (actions) that are executed when you press a number followed by the ALT key (by default). Clicking the *Action* drop-down on the selected row will a list of all available Smart Client instructions, where you can select one to assign to the current rows number. The *Group* drop-down can be used to toggle actions to action groups.

Example of a possible assignment:



You can configure the number of configurable generic actions by changing the value of the *NumericUpDown*.

The highlighted number is the number of configurable actions displayed in the setup form. In the example above this number is 12.

Example of Select Camera

To configure "Select Camera" function,

- Make sure camera number (shortcut) is defined, which are used to identify each camera. This can be defined in the Management Client (XPCO)/Management Application(XPE), each camera's shortcut number is specified in the Shortcut field in the *Client* .

To access the *Client* tab, select the required camera in the *overview* pane, then select the *Client* tab in the properties pane.



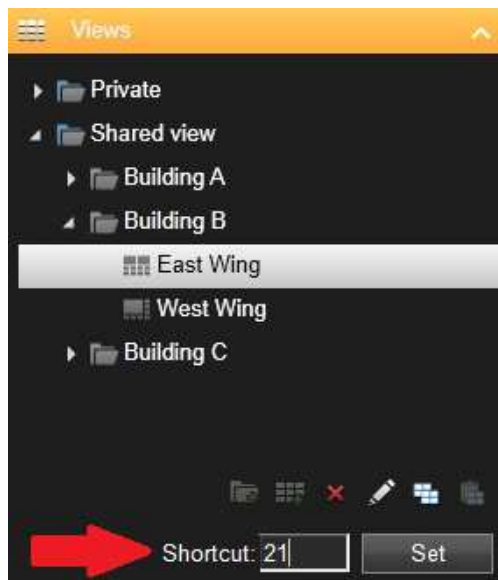
- Configure action from the setup module. This action is set to KEYPAD_CAMERA by default.
- The function can be activated by pressing a number followed by pressing KEYPAD_CAMERA on the device. E.g. press 65 and KEYPAD_CAMERA will switch to camera with shortcut '65'.

Example of Select Monitor

To configure “Select Monitor” function,

- Make sure view number (shortcut) is defined, which are used to identify each view. This can be defined in the Smart Client on the *Setup* tab.

Specify the required shortcut number in the *Shortcut* field.



- Configure action from the setup module. This action is set to KEYPAD_VIEW by default.
- The function can be activated by pressing a number followed by pressing KEYPAD_VIEW on the device. E.g. press 21 and KEYPAD_VIEW will switch to view with shortcut '21'.

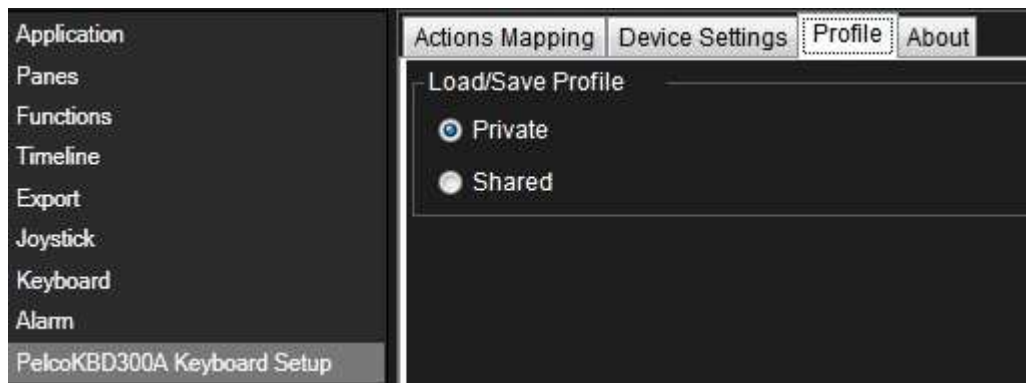


Joystick Options

For joystick setup, please see the Smart Client's built-in help system, under *Options > Joystick Options*.

Profile Options

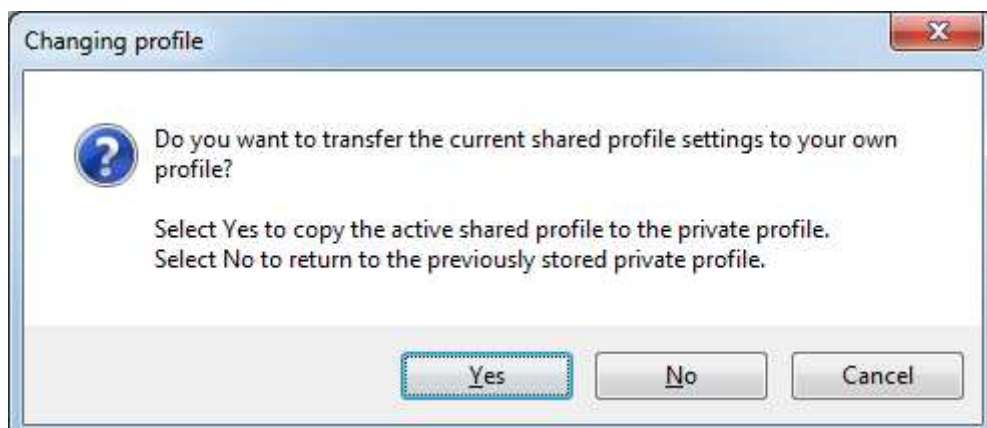
The current setting is stored privately on the server. But it can be transferred to the shared profile, meaning that the settings will be applied to everyone who intends to use this profile.



A message dialog will be displayed if profile changes. For example, changing profile from 'Private' to 'Shared'



Example from 'Shared' to 'Private'





Profile can also be imported from previous version by clicking the 'Import' button on right bottom of the Setup form. This button is only visible if the previous profile exists.



Profile can always be reset to default by clicking the 'Default' button.



Default Settings

Default settings can be activated by clicking the *Default settings* button from the setup form. The default settings include:

- Generic actions (number 1- 12):
 - all not assigned
- AxisT8310 spec:
 - Alt - Select Generic number.
 - Joystick - default joystick move motions such as pan left/right/stop, tile up/down/stop, and zoom in/out
 - JOGDIAL_PLAY_PAUSE – Playback play/stop
 - JOGDIAL_NEXT – Move view item selection up
 - JOGDIAL_PREVIOUS – Move view item selection down
 - JOGDIAL_SHUTTLE_FORWARD/REVERSE – Playback forward/reverse at speed indicated
 - JOGDIAL_SHUTTLE_STOP– Playback play/stop
 - KEYPAD_VIEW – Select monitor by monitor number
 - KEYPAD_CAMERA – Select camera by camera number
 - JOGDIAL_JOG_PLUS -- Browse next image
 - JOGDIAL_JOG_MINUS – Browse previous image
 - F1 – Show live
 - F2 – Show browse
 - F3 – Show setup

Milestone Systems offices are located across the world. For details about office addresses, phone and fax numbers, visit www.milestonesys.com.



The Open Platform Company