

NVRmini 2

Linux Embedded Recorder

Support Megapixel and H.264 cameras



Manage 2 / 4 / 8 / 16 IP Camera



Key Benefits

Stability and Reliability

NVRmini 2 is a linux-embedded system that is free from virus attack. With its server-client architecture, NVRmini 2 provides a most stable and high quality monitoring and recording performance. Not only does its software offer a top quality performance, but the hardware enhances stability as well by supporting 4 RAID levels, smart fan, HDD SMART, auto power on, UPS and much more.

Easy to Use

A top user-friendly system should combine fast and flexible configuration with easy operation. With a few simple steps for installation, the web-based management leads users to configure, monitor and playback video everywhere. UPnP search, auto camera detection and GUI schedule save setting-up time, while the easy drag and drop camera, auto scan, preset point patrolling, and multiple views offer users a prime monitoring experience.

Value-added Surveillance Features

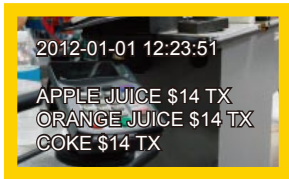
There are some outstanding features included in the NVRmini 2, one of which is mobile phone client. Users can check their live video wherever they want through iPhone, iPad, Android, BlackBerry. Another feature is Point of Sale (POS). POS data is displayed on live screen of designated channels, and users can fast search POS transaction and related video records. Still another NVRmini 2 feature is the digital watermark on exported video and snapshots, which prevents data from tampered without awareness.

Key Features

- Support Stream Profile for remote live view bandwidth control
- Support mobile client for iPhone / iPad / Andriod
- Web-based configuration, live viewer, playback
- Panorama 360° PTZ
- Online GUI recording schedule
- Digital PTZ and multi-view
- Audio recording
- Real-time digital output and Email alert
- Up to 128 CH remote live view
- Playback with 5 intelligent search
- Point of Sale (POS)
- Digital watermark
- Auto port-forwarding
- NTP server synchronization

nVUO®

Web-Based Liveview

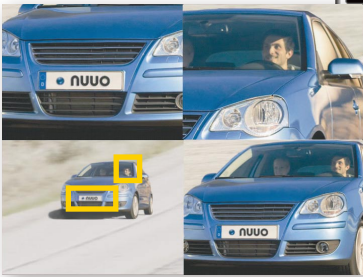


Point of Sale (POS)

POS text overlay on live view video and recordings. All recorded POS transactions are searchable in the NVRmini 2 database.



- Web-based management (Recommend on IE 8 and later)
- Up to 128 CH remote live view with multiple monitors
- Easy camera-drag-and-drop on screen
- Camera PTZ integration
- Digital PTZ
- Auto scan
- Multi-view
- Preset point set, go and patrolling
- Joystick support for easier camera controlling
- System event popup
- Camera event on screen display and sound notification



Multi-View

with duplicating camera on screen and with different digital zoom image.

Intelligent Playback



- Open record by time, graphic record, event log
- Multi-channel playback
- Playback with 5 intelligent search
- Video enhancement
- POS search
- Support digital watermark on exported video or snapshot
- Evidence export
- Auto backup video to FTP

Video Enhancement

Fine-tune the image's visibility, sharpness, brightness, contrast or even grey scale.

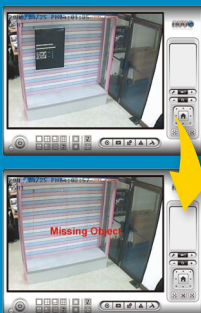


5 Intelligent Search

General Motion



Missing Object



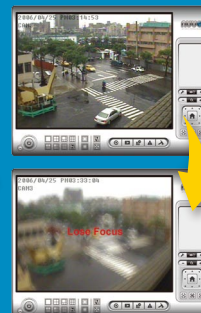
Camera Occlusion



Foreign Object



Lose Focus

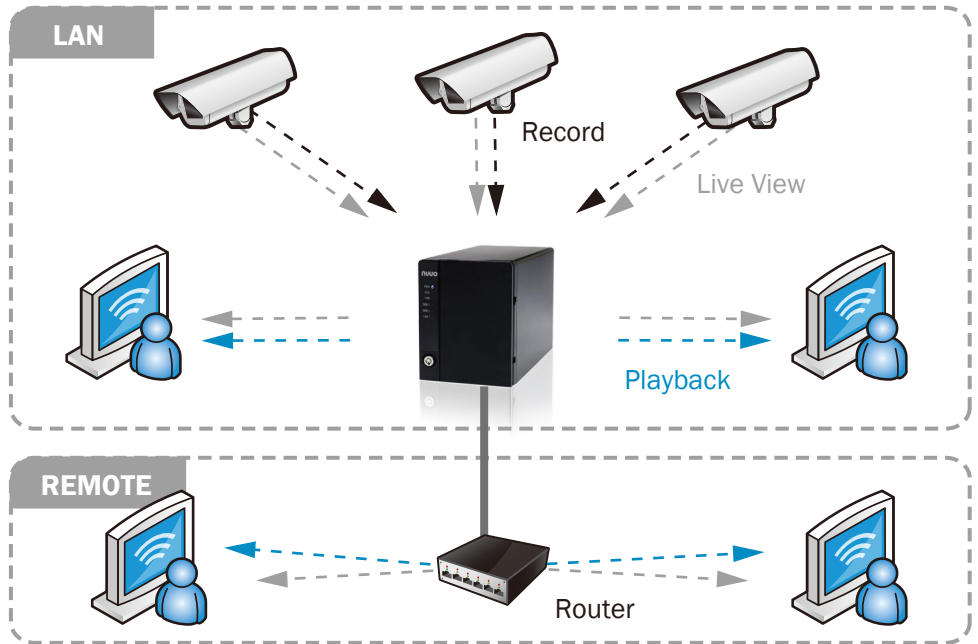


Multiple Language Support

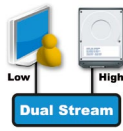
Chinese (Simplified), Chinese (Traditional), Croatia, Czech, Dutch, English, Finnish, French, German, Hebrew, Hungarian, Italian, Japanese, Korean, Polish, Portuguese (Brazil), Russian, Serbian, Spanish, Swedish, Thai, Turkish

Server-Client Architecture

- Linux embedded – free from PC crash and virus attack
- RAID 0,1,5,10, for maximum capacity or data protection
- Support megapixel camera and H.264 compression format
- Remote I/O solution and camera I/O integration
- Four kinds of user authorities: administrator, power user, user, and guest
- E-map with indicator
- Alarm source of NUUO Central Management System



Linux-Embedded
Embedded Linux for high stability and free from virus attack



Dual Streams
Dual stream for managing bandwidth



Panorama 360° PTZ
Generic dewarp (fish-eye)
Panorama PTZ function can reduce the total cost by decreasing the number of IP cameras. Not only the original view, NVRmini 2 also supports rectilinear, quad, and dual-view panorama modes.



Web-Based Live Viewer
Users can login anytime anywhere via Internet Explorer and can login via four different user groups: administrator, power user, user, and guest.



Compatible with CMS
Ultimate central monitoring solution for grand scale projects and projects with multiple sites.



Multi-Platform Mobile Clients
iPhone, iPad, Android



Intelligent Search
Search recorded video for 5 events including general motion, foreign object, missing object, loss focus and camera occlusion.



RAID 0,1,5,10
Support RAID 0,1,5 and 10 for maximum capacity or data protection.



PTZ Control
Software enables digital PTZ function. Physical PTZ control and preset/go functions are also available.



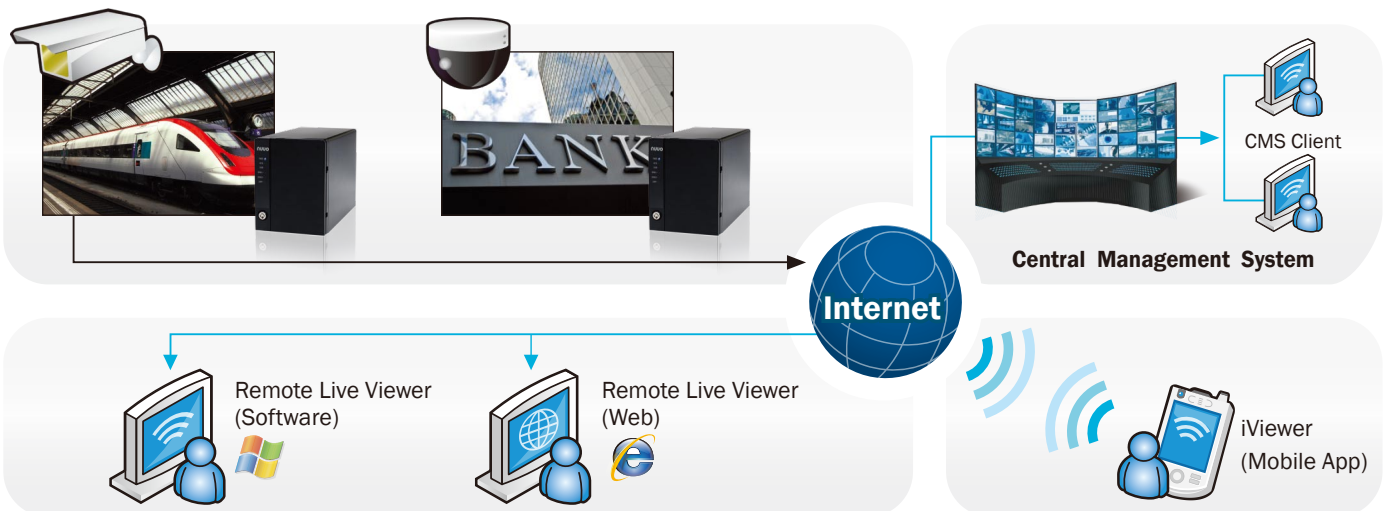
128CH Remote Live View
Monitor multiple NUUO servers for Mainconsole Family simultaneously in one single interface.





Email Alert
Notify users on camera and system event through sound, digital output, Email and NUUO CMS alert.



Point of Sale (POS)
All recorded POS transactions are searchable in the NVRmini 2 database.



Specification

Model	NVRmini 2			
Product Image	 2-bay Tower		 4-bay Tower	
Part Number	NE- 2020	NE- 2040	NE-4080	NE-4160
Recording Camera	1-2	1-4	1-8	1-16
Number of Drives	2xSATA II		4xSATA II	
Available Drive Bays (US only)	1, 2, 6TB		1, 4, 8, 12TB	
RAID Level	RAID 0,1		RAID 0, 1, 5, 10	
I/O Interface	2xUSB 2.0 (for UPS)		2xUSB 2.0 (for UPS), 1xeSATA (for DAS)	
LAN Port (s)	1xGigabit RJ-45 ethernet port		2xGigabit RJ-45 ethernet ports	
Temperature (Operating with HDD)	0 °C ~ 40 °C			
Humidity (Operating)	5% ~ 95%			
Compression Format	MPEG4, M-JPEG, H264, MxPEG (Depends on IP camera)			
Recording Performance	40Mbps		80Mbps	
Remote PC CPU	Intel Core 2 Duo, 2.6 GHz			
Remote PC RAM	1 GB			
User Interface	HTTP web browser - Internet Explorer 8, 9, 10 / NUUO client application program			
Recording Type	Continuous record, record by schedule, manual record, event trigger record, digital input trigger record			
Remote Live View Control	Live view, preset/ go, PTZ, remote I/O, snapshot, multi-view, digital PTZ, advanced E-Map, bandwidth monitoring			
Audio & Video Recording	Audio & video recording in synchronization			
POS	Live view, record, playback, and search for every transaction			
Auto Backup	Automatically backup the recorded video of the previous date to FTP			
Smart Search	General motion, missing object, foreign object, lose focus, camera occlusion			
Remote Client OS Platform	Windows XP (32-bit) / Windows 7 (32 and 64-bit) / Windows 8 (32 and 64-bit)			
Remote Live View Connections	Live view maximum 64 connections at the same time			
Mobile Client OS Platform	iPhone, iPad, Android			

Part Number	Remark
NE-2020-AU	NE-2020 with AU cable
NE-2020-EU	NE-2020 with EU cable
NE-2020-JP	NE-2020 with JP cable
NE-2020-UK	NE-2020 with UK cable
NE-2020-US	NE-2020 with US cable
NE-2040-AU	NE-2040 with AU cable
NE-2040-EU	NE-2040 with EU cable
NE-2040-JP	NE-2040 with JP cable
NE-2040-UK	NE-2040 with UK cable
NE-2040-US	NE-2040 with US cable
NE-4080-AU	NE-4080 with AU cable
NE-4080-EU	NE-4080 with EU cable
NE-4080-JP	NE-4080 with JP cable
NE-4080-UK	NE-4080 with UK cable
NE-4080-US	NE-4080 with US cable
NE-4160-AU	NE-4160 with AU cable
NE-4160-EU	NE-4160 with EU cable
NE-4160-JP	NE-4160 with JP cable
NE-4160-UK	NE-4160 with UK cable
NE-4160-US	NE-4160 with US cable

Support 84 brands of IP cameras and 2064 models



About NUUO

Our core value is to help improve your overall experience in integrating, installing, serving and educating your customers. NUUO is one of the very first pure CCTV manufacturer specializing in development of hybrid and IP recording technologies. There are currently over 10,4000 installations worldwide that are secured by our IP and hybrid systems. We promise to continue bring reliability, innovation and excitement to you through passion and dedication.